

3X2 POP UP EXHIBITION STAND WITH TV STAND

FEATURES:

- 3x2 Pop Up Exhibition Stand With TV Stand
- TV Stand Supports Screens Up to 60"/42kg
- Free Standing TV Stand Can be Used Alone
- Straight or Curved Pop Up Displays
- Wheeled Transportation Hard Case
- Premium Quick+ Pop Up Stand Hardware
- 2x Low-Cost LED Lights Included
- High-Quality Printed Graphics
- Complete Exhibition Stand Bundle



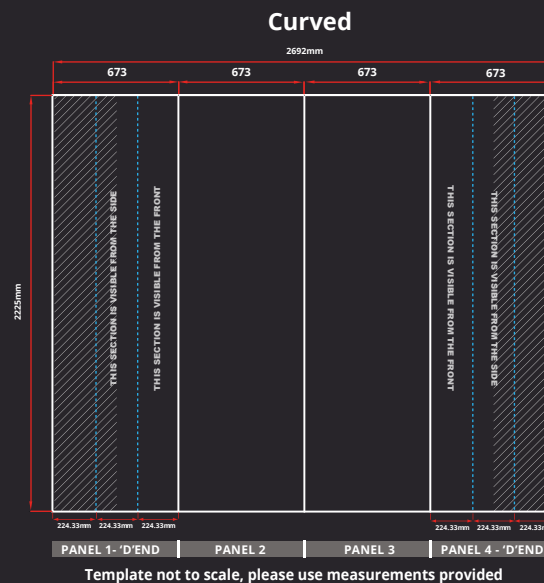
TV Stand Supports
Screens Up To 60"/42kg



Free Standing TV
Can Be Used Alone



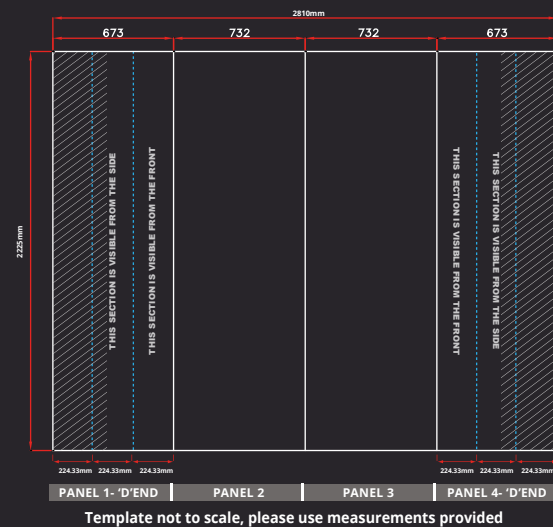
DIMENSIONS:



Cutout

160mm

140mm



01733 511030
sales@xldisplays.co.uk