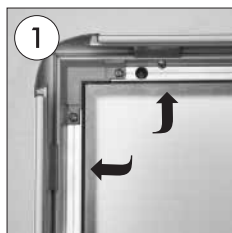
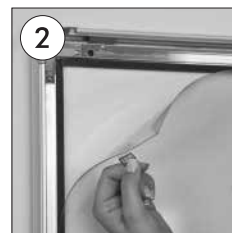


# EDGE ILLUMINATED OUTDOOR LED POSTER FRAME INSTALLATION USER GUIDE



Open all profiles upwards



Use the PULL sticker to take off the anti-reflex protector



Place in the posters. After placing the cover back on the poster, close the profile downwards



## WALL MOUNTING:

### ⚠ CAUTION:

- Do not step on the light panel nor place the heavy object on the light panel
- Do not pull the cable with excessive force
- Use correct capacity and voltage of D.C. power supply. Failure to observe this instruction could result in breakdown
- Do not touch the light panel or electrical devices with wet hand. Failure to observe this instruction could result in electrical shock and severe injuries
- Please do not hang right in front of chimney, air conditioning and ventilation outlets
- Keep this out of the direct rays of the sun. Failure to observe this instruction could result in colour changes of acrylic plate
- Keep away from fire or severe hot place. Acceptable ambient temperature is max. 35. Failure to observe this instruction could result in shortening the life time and degradation of brightness of LED light source



OPTION 1

Fix the screw and wall plug to the wall

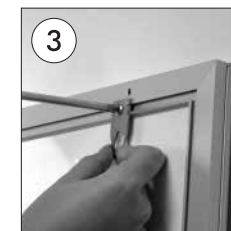


Hang the smart LED box by fitting the hangers on the screws



OPTION 2

Open the PVC Panel of the Smart LED box outwards. Fix on the wall by using the mounting holes under the PVC profiles with the help of screws and wall plugs



You can mount the product either in landscape or portrait position by loosening the screw of the hangers



## POWER SUPPLY USAGE:



Fix the power source to the short side of the LED box frame's jack

**XL**  
displays

01733 511030  
sales@xldisplays.co.uk