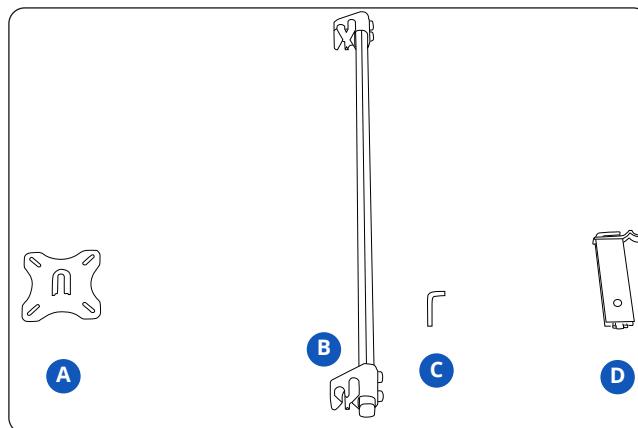


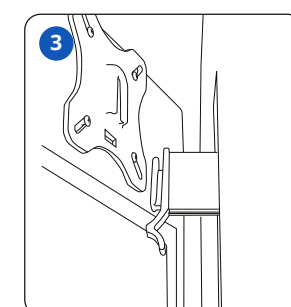
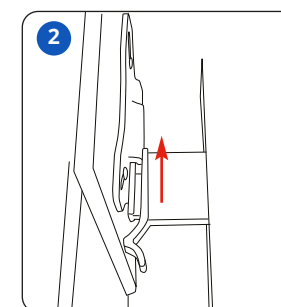
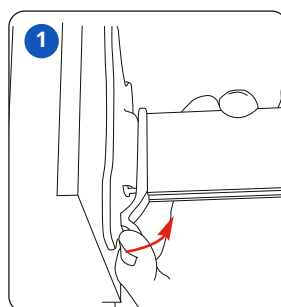
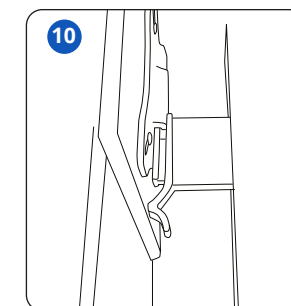
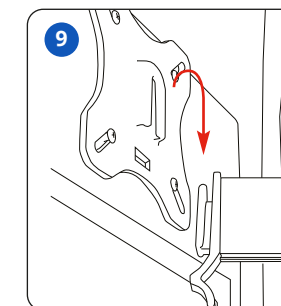
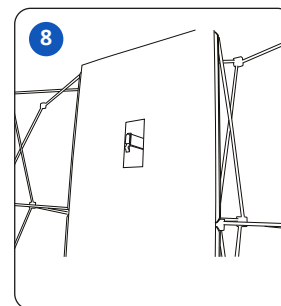
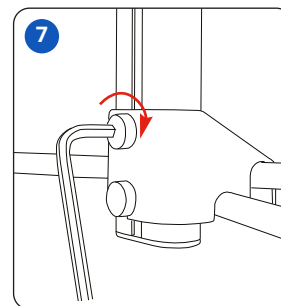
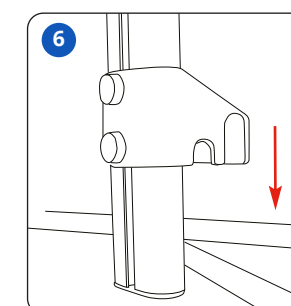
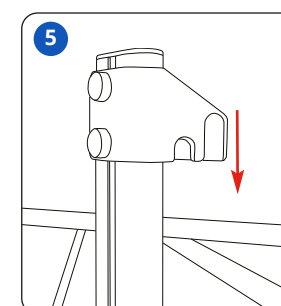
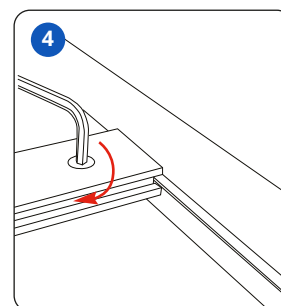
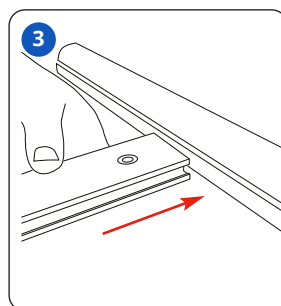
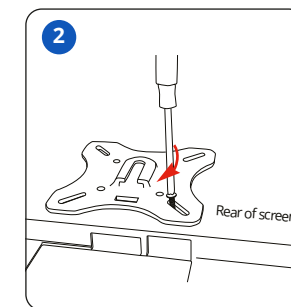
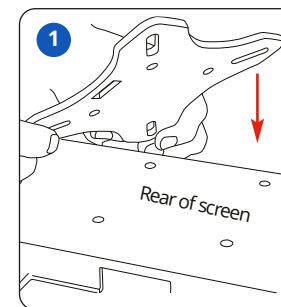
POP UP STAND TV MOUNT ASSEMBLY INSTRUCTIONS

HARDWARE SPECIFICATIONS:

- Max Screen Size: 22"
- Max Screen Weight: 5kg
- 100/75/50 vesa compatible
- Ensure mount is flat back for vesa mount plate
- If using a straight or rear curved system please use stabilising feet directly under screen



D screen mount (B) Pop up bracket (C) Allen key (D) Pop up LCD beam



RELEASING SCREEN



01733 511030
sales@xldisplays.co.uk