

# 3 SIDED BOLLARD COVER 1200 X 100 mm

Artwork Guidelines & Sizing

## ARTWORK SIZE:

Artwork size (100% 300 dpi):

**1200mm (H) x 100mm (W)**

---

## PLEASE NOTE:

For optimum printing results artwork documents should be submitted in vector format in either EPS or High Quality PDF.

Ensure that all text has been outlined, any images or placed items are linked within the document and that all layers have been flattened.

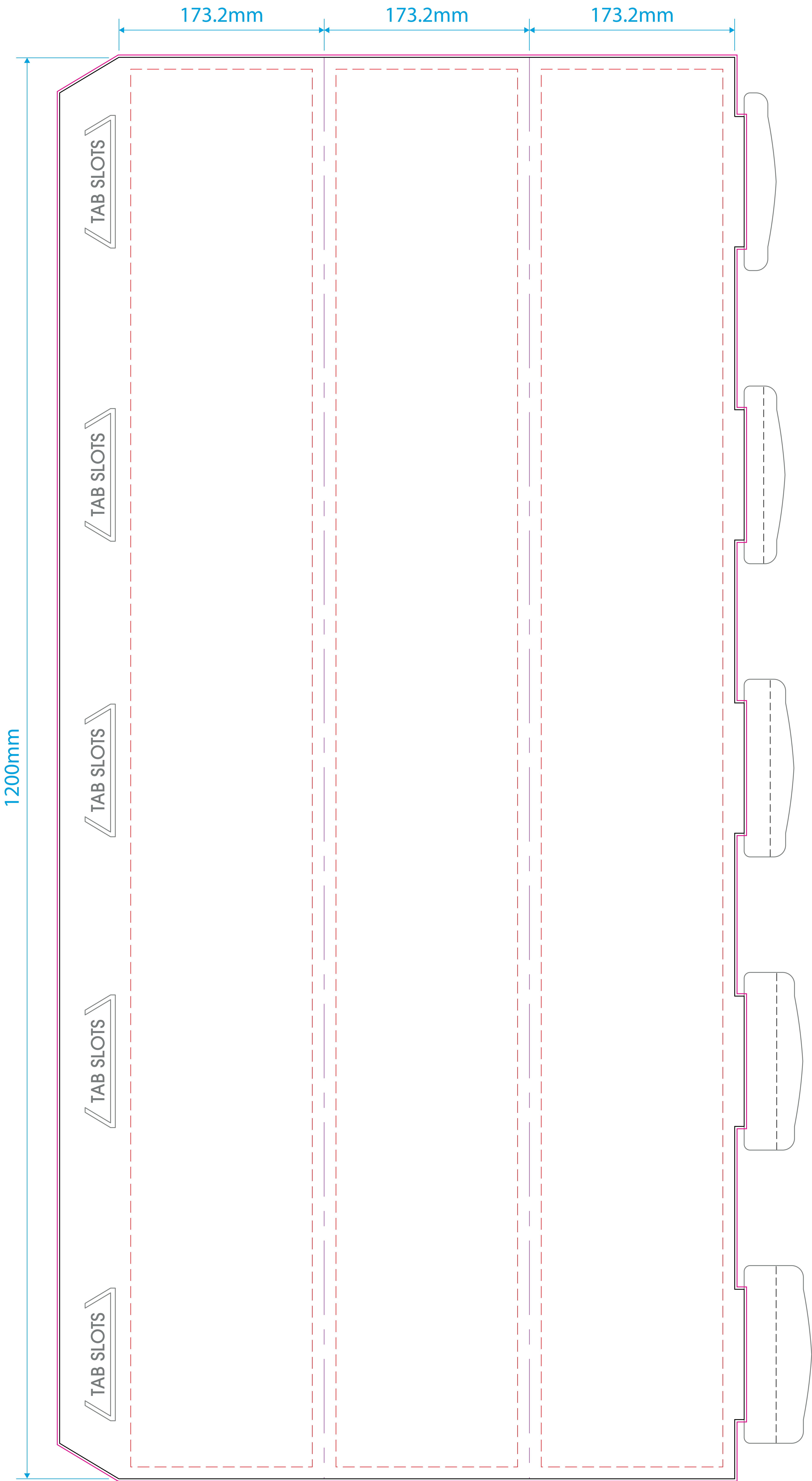
- No bleed or crop marks
- Set up your artwork in CMYK at **300dpi**
- The artwork should be at **100%** of the total size
- Pantone colours accepted

CMYK Printing of Solid Black - To achieve a solid black in your artwork, please create solid black with the following colour reference:

**C:100 / M:100 / Y:100 / K:100**



01733 511030  
[sales@xldisplays.co.uk](mailto:sales@xldisplays.co.uk)



Template guidelines - PLEASE READ

- The Black keyline = Artwork area.
- The Pink keyline = Your background must extend to this line.
- - - The Red dashed keyline = Safe Area - It's advised that you keep all important information within this area.  
**Delete or hide this keyline after use.**
- The Purple keyline = Folds of the product.
- - - The Black dashed keyline = Printed lines for customer assembly.