

4X2 XL JUMBO STRAIGHT POP UP DISPLAY

Artwork Specification

MEASUREMENTS

4 panels = 2x front panels & 2x 'D-End' panels

- Total Artwork size: 2810mm (w) x 2968mm (h)
- Artwork size 25%: 702.5mm (w) x 742mm (h)
- Front panels = 732mm / 183mm (25%)
- 'D-End' panels = 673mm / 168.25mm (25%)

Template below not to scale, please use measurements provided

GENERAL GUIDELINES

For optimum results, we require all artwork documents to be submitted in **Vector Format** in either **EPS**, Adobe Illustrator (Ai) or High Quality PDF.

Please ensure that all **text has been outlined**, any images or placed items are **linked / embedded** within the document and that all **layers have been flattened**.

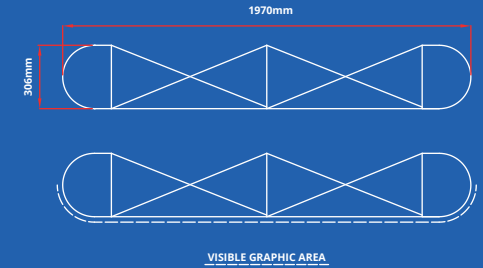
No bleed or crop marks | Set up your artwork in **CMYK** at **300dpi**

CMYK Printing of Solid Black - To achieve a solid black in your artwork, please create solid black with the following colour reference: **C:100 / M:100 / Y:100 / K:100**

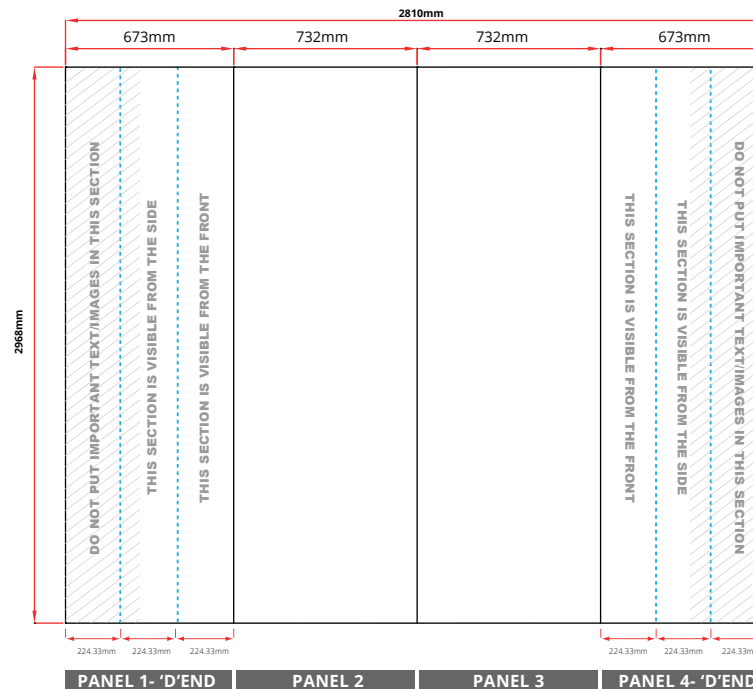
The artwork should be sized at **25%** of the total artwork size.

For text, images or logos on the 'D-End' panels, please position items in accordance with the diagram.

FOOTPRINT



01733 511030
sales@xldisplays.co.uk



Template not to scale, please use measurements provided